

NO.	REVISIONS	DATE:

**RESEARCH FOREST DRIVE AND GROGANS MILL ROAD
EXISTING INTERSECTION**
 RESEARCH FOREST DRIVE AND LAKE WOODLANDS DRIVE
 CORRIDOR STUDY
 MONTGOMERY COUNTY PRECINCT 3
 THE WOODLANDS, TEXAS

JOB NO.
4609.001
 PROJECT MGR.
LRH



SHEET
EXISTING

Conflict Point Summary
Existing Intersection
 Total Conflict Points = 43
 X Crossing = 24
 ● Merge = 10
 ○ Diverge = 9

Alternative	2045 Intersection Operations		Conflict Points			Total
	AM Peak Hour	PM Peak Hour	Merge	Diverge	Crossing	
Existing Intersection	LOS E	LOS E	10	9	24	43
Alt 1: Partial Displaced Left Turn	LOS C	LOS C	13	9	68	90
Alt 2: Diverging Diamond	LOS C	LOS B	10	8	7	25
Alt 3: Tight Diamond	LOS D	LOS D	11	9	20	40
Alt 4: Low Impact PDT (2030 Operations)	LOS C*	LOS C*	11	9	47	67

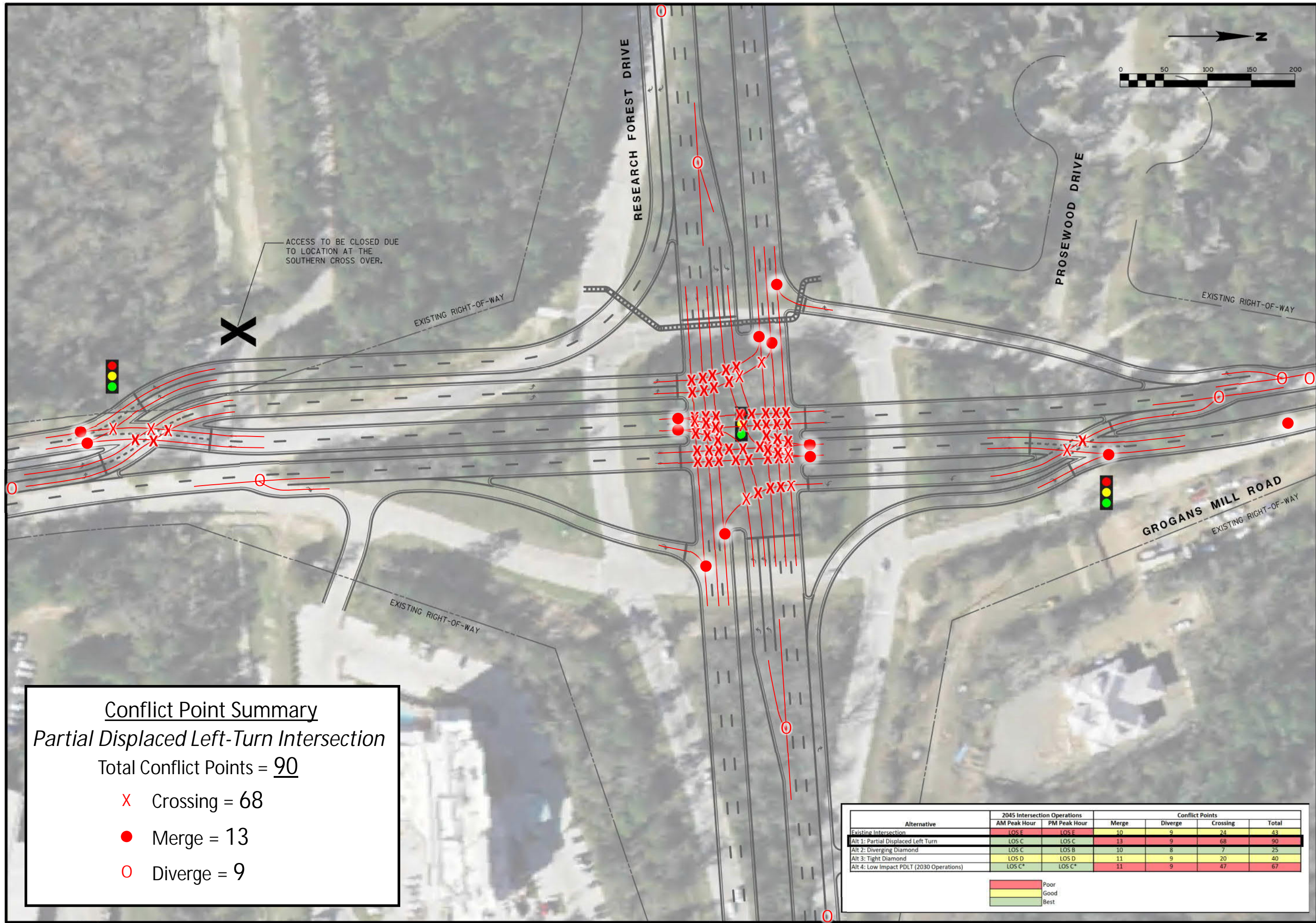
Poor
 Good
 Best

\$FILE\$

\$USER\$

\$DATE\$

\$TIME\$



NO.	REVISIONS	DATE

RESEARCH FOREST DRIVE AND GROGANS MILL ROAD
ALT 1: PARTIAL DISPLACED LEFT-TURN
 RESEARCH FOREST DRIVE AND LAKE WOODLANDS DRIVE
 CORRIDOR STUDY
 MONTGOMERY COUNTY PRECINCT 3
 THE WOODLANDS, TEXAS

JOB NO.
4609.001
 PROJECT MGR.
LRH



SHEET
ALT 1

Conflict Point Summary
Partial Displaced Left-Turn Intersection
 Total Conflict Points = 90
 X Crossing = 68
 ● Merge = 13
 ○ Diverge = 9

Alternative	2045 Intersection Operations		Conflict Points			Total
	AM Peak Hour	PM Peak Hour	Merge	Diverge	Crossing	
Existing Intersection	LOS E	LOS E	10	9	24	43
Alt 1: Partial Displaced Left Turn	LOS C	LOS C	13	9	68	90
Alt 2: Diverging Diamond	LOS C	LOS B	10	8	7	25
Alt 3: Tight Diamond	LOS D	LOS D	11	9	20	40
Alt 4: Low Impact PDLT (2030 Operations)	LOS C*	LOS C*	11	9	47	67

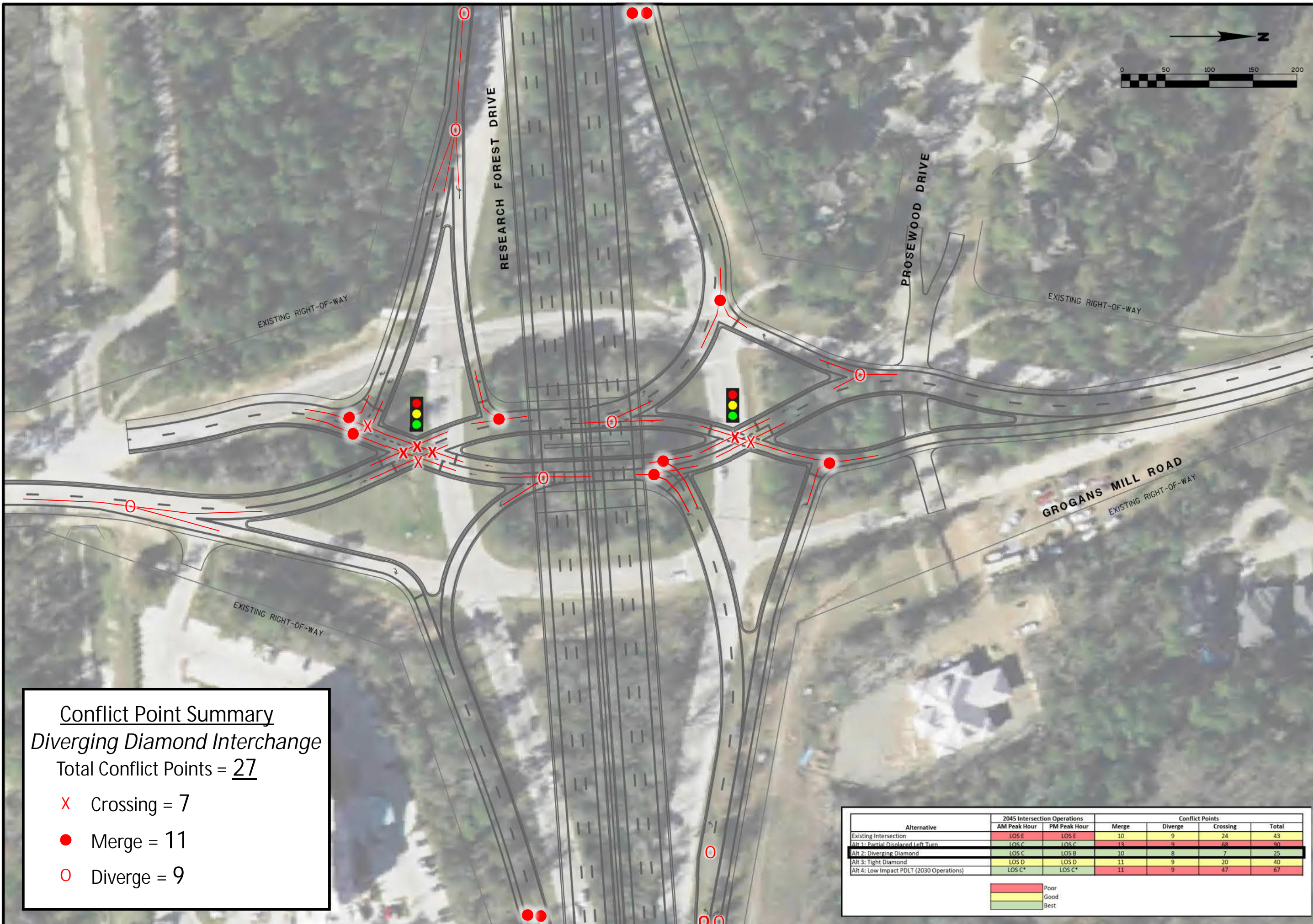
■ Poor
■ Good
■ Best

\$FILE\$

\$USER\$

\$DATE\$

\$TIME\$



Conflict Point Summary
Diverging Diamond Interchange
 Total Conflict Points = 27

X Crossing = 7
 ● Merge = 11
 ○ Diverge = 9

Alternative	2045 Intersection Operations		Conflict Points			Total
	AM Peak Hour	PM Peak Hour	Merge	Diverge	Crossing	
Existing Intersection	LOS E	LOS E	10	9	24	43
Alt 1: Partial Displaced Left Turn	LOS C	LOS C	13	9	68	90
Alt 2: Diverging Diamond	LOS C	LOS B	10	8	7	25
Alt 3: Tight Diamond	LOS D	LOS D	11	9	20	40
Alt 4: Low Impact PDLT (2030 Operations)	LOS C*	LOS C*	11	9	47	67

■ Poor
■ Good
■ Best

NO.	REVISIONS	DATE

RESEARCH FOREST DRIVE AND GROGANS MILL ROAD
ALT 2: DIVERGING DIAMOND INTERCHANGE
 RESEARCH FOREST DRIVE AND LAKE WOODLANDS DRIVE
 CORRIDOR STUDY
 MONTGOMERY COUNTY PRECINCT 3
 THE WOODLANDS, TEXAS

JOB NO.
4609.001
 PROJECT MGR.
LRH



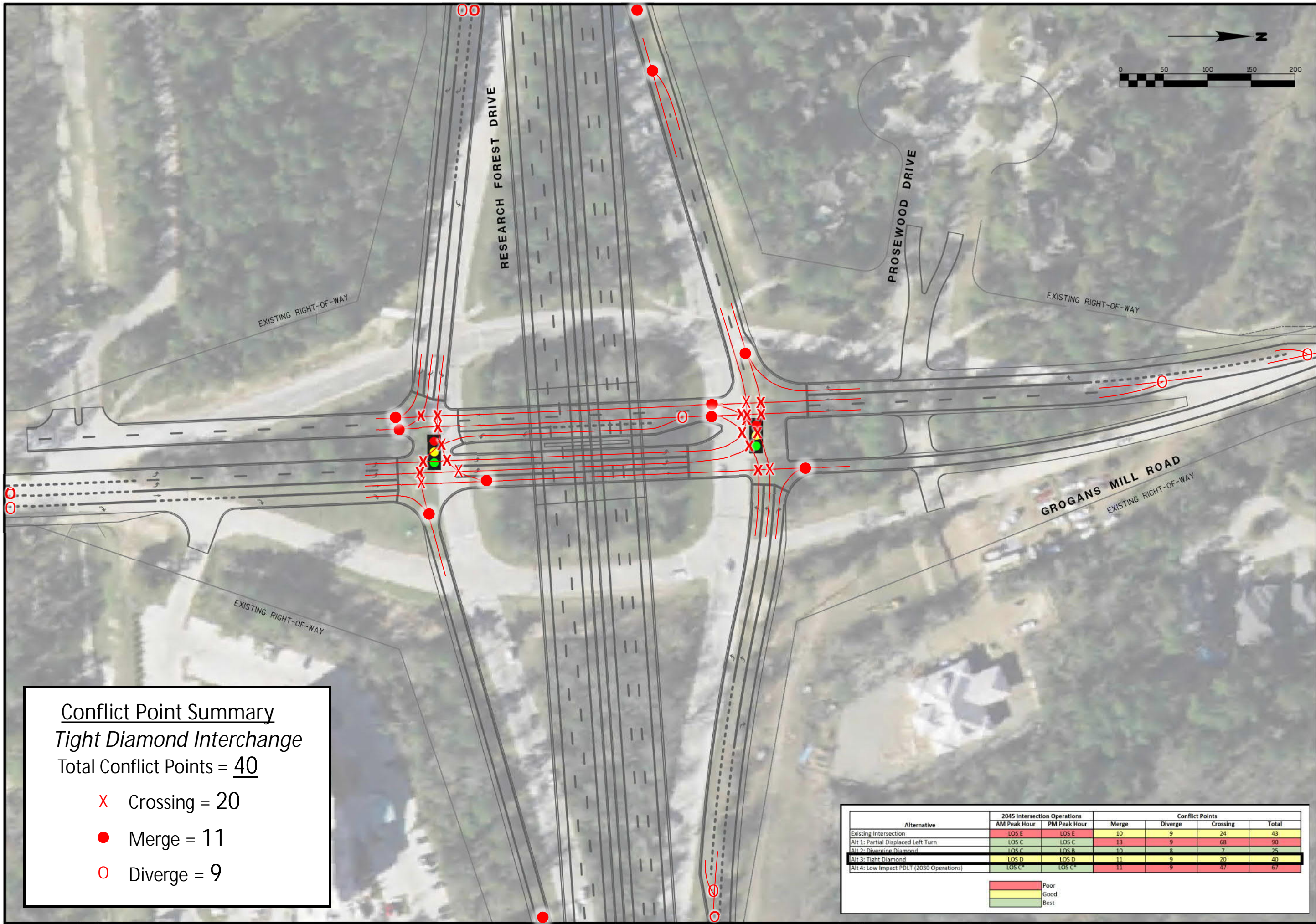
SHEET
ALT 2

\$FILE\$

\$USER\$

\$DATE\$

\$TIME\$



Conflict Point Summary
Tight Diamond Interchange
 Total Conflict Points = 40

- X Crossing = 20
- Merge = 11
- Diverge = 9

Alternative	2045 Intersection Operations		Conflict Points			Total
	AM Peak Hour	PM Peak Hour	Merge	Diverge	Crossing	
Existing Intersection	LOS E	LOS E	10	9	24	43
Alt 1: Partial Displaced Left Turn	LOS C	LOS C	13	9	68	90
Alt 2: Diverging Diamond	LOS C	LOS B	10	8	7	25
Alt 3: Tight Diamond	LOS D	LOS D	11	9	20	40
Alt 4: Low Impact PDLT (2030 Operations)	LOS C+	LOS C+	11	9	47	67

	Poor
	Good
	Best

NO.	REVISIONS	DATE

RESEARCH FOREST DRIVE AND GROGANS MILL ROAD
ALT 3: TIGHT DIAMOND INTERCHANGE
 RESEARCH FOREST DRIVE AND LAKE WOODLANDS DRIVE
 CORRIDOR STUDY
 MONTGOMERY COUNTY PRECINCT 3
 THE WOODLANDS, TEXAS

JOB NO.
4609.001
 PROJECT MGR.
LRH



SHEET
ALT 3

